



# BAREFOOT SAFARIS & Adventure Tours

Tel/fax: (27) 73 462 9232  
After hours: (27) 78 630 9734  
Mobile: (27) 72 462 9232  
E-mail: [enquiries@barefoot-safaris.com](mailto:enquiries@barefoot-safaris.com)  
Web: [www.barefoot-safaris.com](http://www.barefoot-safaris.com)

1157 Aspen Dr  
Dainfern Ext 7  
Johannesburg  
2191  
South Africa.

## TRIP DOSSIER

**BOTSWANA: Gabi (GK)**  
**(11DAYS LAND ONLY)**  
*Revised 04 February 2014*

Botswana is a land-locked country dominated in geographical terms by the Kalahari Desert - a sand-filled basin averaging 1,100 meters above sea level. The country lies between longitudes 20 and 30 degrees east of Greenwich and between the latitudes 18 and 27 degrees approximately south of the Equator.

Botswana is bordered by Zambia and Zimbabwe to the northeast, Namibia to the north and west, and South Africa to the south and southeast. At Kazungula, four countries - Botswana, Zimbabwe, Zambia and Namibia - meet at a single point mid-stream in the Zambezi River.

The term "Batswana" refers to the ethnic group of people who speak the Setswana language and share the Sotho-Tswana culture, while in its common contemporary usage, it refers to all citizens of the Republic of Botswana, regardless of their ethnic background. The singular is "Motswana": a citizen of the country. "Tswana" is used as an adjective - for example "Tswana state" or "Tswana culture".

Parks and reserves have been established for the protection of the wildlife. Here, in the wilderness of Botswana, it is you who are the intruder and your presence is a privilege.

Despite its natural bounty with magnificent landscapes trampled by some of Africa's finest wild herds, Botswana remains all but unvisited by independent travelers. The endless miles of untouched wilderness invite unparalleled and safe adventure.

So, DumelaRra, DumelaMma.

**Grading:** *Anyone in good health with a sense of adventure should be able to take part. There's no real physical difficulty involved, but as in much of Africa – rough roads, limited facilities and basic accommodation may require you to adjust your levels of expectation.*

**NB:** *Although it is our intention to operate this itinerary as printed and detailed below, it may be necessary to make some changes as a result of alterations to flight schedules, climatic conditions, limitations of infrastructure such as accommodation, or other operational factors. As a consequence, the order or location of overnight stops may vary from those outlined. Included meals are indicated in the daily itinerary i.e. BLD- Breakfast, Lunch, and Dinner).*

### **Day 1: Nata; 13/05/14.**

We will collect you at Gabi's house in Pretoria. We then depart for Botswana. We cross into Botswana after border control and head for our overnight stay place.

Over 80% of Botswana is part of the immense former desert known as the Kalahari. It is a semi-arid region of grassland or thorn trees where rainfall is erratic and exceeded by evaporation in every month of the year. The Okavango Delta aside, there is no permanent standing water.

After arrival we settle in. The rest of the afternoon is free to sit next to the waterhole, watching the animals coming down to drink.

After dinner we watch the African night sky before turning in to bed.

*En- suite chalet;*

### **Day 2: Gweta; 14/05/14.**

This morning after breakfast, we do a drive as we head out of the sandy road on the way to Gweta. We start to see the change in vegetation and landscape.



*Baobab tree-Makgadikgadi.*

The Makgadikgadi Pans are flat, featureless salt and clay depressions interspersed with sand dunes, islands of rock, grassy plains and patches of Kalahari desert. Good rains



cover the pans with shallow waters. The two main pans of Nxai are large, open grass-covered stretches studded with mopane, acacia and baobab trees (notably the seven known as Baines' Baobabs, first painted by the explorer Thomas Baines in 1862). The whole area was once part of an ancient super-lake. Herds of migratory zebra and wildebeest increase predator numbers (lion, cheetah and hyena). Giraffe, buffalo, elephant and various antelope, including desert-adapted Gemsbok and Springbok. December - February, the rain-filled pans host thousands of migrant flamingos and other water birds, such as pelicans, spoonbills, waders and storks.

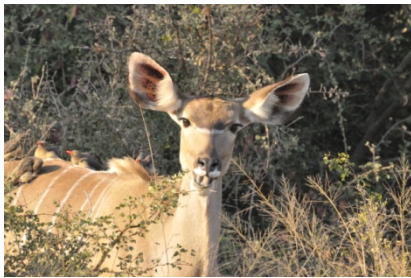
We settle into our lodge on the edge of the Makgadikgadi Pans. The afternoon is free to explore or to make use of any of the optional excursions available.

*En- suite chalet; 2 nights (2 x B, 2 x D)*

### Day 3: Gweta; 15/05/14.

After breakfast we leave the camp to explore the pans. The sensation of vast open space, timelessness and complete nothingness; that's what we will find over here.

One has the option to explore the pans on a quad bike. Same is not included and your guide will assist you to book same if need be.



Greater Kudu.

We have the morning & afternoon to explore the Makgadikgadi pans. We return in time to enjoy the sundowner before going to dinner.

### Day 4: Maun; 16/05/14.

We drive, after breakfast, to Maun.

Maun is the gateway to the one of the best wildlife experiences you will ever have - a safari in the unforgettable Okavango Delta. Maun has grown rapidly from its early days as a small, rural frontier town and has now spread along the wide, usually dry Thamalakane River. Since the town's

establishment in 1915 as the tribal capital of the Batswana people, Maun has had a rough and ready reputation as a hard-living 'Wild West' town servicing the local cattle ranching and hunting operations. But with the growth of the tourism industry and the completion of the tar road from Nata in the early 1990s, Maun has developed rapidly, losing much of its old frontier town character. It is now home to over 30,000 people. We have the afternoon free to explore unescorted. Discuss with your guide what optional excursion you want to do tomorrow to enable us to book same in good time.

After another great African sundowner, we go to dinner before we turn in for the night.



Hippo in the Okavango.

*En- suite chalet; 2 nights (2 x B, 2 x D)*

### Day 5: Maun; 17/05/14.

Today is the day of optional excursions. Your guide will assist you to select whatever excursion you would prefer to partake in. A unique water based ecosystem in the middle of the largest stretch of sand in the world (the Kalahari basin). Crystal clear flowing channels of water wending their way through reeds, papyrus and water lilies, lagoons bursting with life including hippos, crocodiles, elephants, birds, fish and amphibians, palm studded islands sticking out from this remarkable landscape and clear star studded night skies over this unpolluted tapestry of life. Welcome to the Okavango Delta of Botswana, where the lush vegetation and vast waterways are home to possibly the best game viewing in the world. Covering between 16,000 to 18,000 Sq Kms (water levels depending) this amazing area can be split into four distinct areas: You will have time for a morning optional activity

Some describe this as the most beautiful place in Africa and indeed it does capture the soul with its combination of vastness and remoteness, with small palm tree islands protruding from the deep water channels that criss-cross this floodplain.

The only way into this area is by boat or small plane, it is possible to do day trips from Maun on local boats called mokoros to the edges of the Delta but the real scenery can only be appreciated from the central areas.

Your guide will assist you to make a booking as to what ever optional activity you want to partake in.

### Day 6: Kasane; 18/05/14.

In the morning, we leave Maun and head north to Kasane. Your drive will take you through some wonderful areas of Mopane woodland where you might see a pack of Wild Dogs or a rare Sable Antelope.

You will also pass regions of Acacia savannah that are good places to look out for Giraffe. It could be a long days driving, but really rewarding

We have the afternoon free to relax.

*En- suite chalet; 4 nights (4 x B, 4 x D)*

### Day 7: Kasane; 19/05/14.

After breakfast we go out on our first game drive. We will explore the wildlife haven of the Chobe River – a place that is renowned to have the greatest concentration of Elephants in Africa. There will be the opportunity for an **optional** boat cruise to view game from the water, providing a unique perspective for your safari tour. Your guide can assist you in booking same.

We will go on 2 game drives today. The first game drive being in the morning, then later in the afternoon a game drive again. Same depending if you go on a boat safari.

We have the late afternoon, evening, free before going for dinner



Saddle billed stork – Chobe.

### Day 8: Day Trip to Vic Falls; 20/05/14.

After breakfast we depart for our day trip to Zimbabwe.

David Livingstone, the Scottish missionary and explorer, is believed to have been the



first European to view Victoria Falls on 16 November 1855 from what is now known as Livingstone Island, one of two land masses in the middle of the river, immediately upstream from the falls on the Zambian side. Livingstone named his discovery in honour of Queen Victoria, but the indigenous name, Mosi-oa-Tunya—"the smoke that thunders"—continues in common usage as well.



*The Majestic Vic Falls.*

The nearby national park in Zambia, for example, is named *Mosi-oa-Tunya*, whereas the national park and town on the Zimbabwean shore are both named *Victoria Falls*. The World Heritage List officially recognizes both names.

**Please make sure you have a visa for this visit.**

There are lots of optional excursions that your guide can assist you to book including:

- Abseiling
- Bungee Jumping
- Elephant Back Trails
- Flights over Victoria Falls
- Gorge Swing
- Horse Back Trails
- Hydro speeding
- Kayaking
- Lion Walks
- River Boarding
- Swimming below Victoria Falls
- Walk with Cheetahs
- White Water Rafting

We return to our lodge in the late afternoon in time for a sundowner. After dinner we head for our bed after an exciting day.

**Day 9: Kasane; 21/05/14.**

After our breakfast we head out on another game drive. On our second day in the reserve we undertake an exciting vehicle safari, providing us with an excellent opportunity to enjoy the sights, sounds,

and silence of the bush at a relaxed pace and is an experience not to be forgotten!

Whilst driving around the lake area we may see waterbuck, eland, roan, sable, hartebeest, zebra, impala and Puku. At the lake itself there are many water birds to be seen, while a wide variety of riverine and woodland species are attracted to the vicinity of the Chobe River.

We return to lodge to avoid the midday heat, and relax in the shade before heading out again to explore further in the late afternoon on a boat game drive.

**Day 10: En-route to S.Africa;22/05/14.**

We enjoy our final morning at the lodge and in the late morning, as we begin our trip back to South Africa. We drive through the tree studded veld, still on the lookout for game and birds on our way to our overnight lodge. After we have settled in the rest of the afternoon is free to spend next to the water hole, spotting game and birds.

We overnight outside Nata.

This is our last night to look at the stars in Botswana. We have our last dinner before we are off to bed.

*En-suite chalet, 1 night  
(1 x B, 1 x D)*

**Day 11: Pretoria; 23/05/14.**

In the morning we say goodbye to Nata, and head out to Pretoria. Our drive takes us through the rich bushveld of the north of Transvaal. Our ETA is late afternoon.

End of Service.

(B)

**RESPONSIBLE TRAVEL**

Since January 2003, Barefoot Safaris has donated £10 for every person we take to Zambia, to assist with the funding and development of **Chanyoli School**. Parents and school staff have recently fired 60,000 bricks and will begin building this year. You may like to bring some books or school equipment to assist this very deserving project and see for yourself how well received it is.

We also support the **SOS Children's Village**, which you can visit in Lilongwe. They

would be most grateful for any children's clothes or toys that you might donate.

**Price Includes:**

- All transport on tour.
- All meals as per itinerary.
- All park entry fees.
- All game viewing activities as per itinerary.
- All accommodation fees as per itinerary.
- Safari equipment.
- Reference library.
- Deep freezer.

**Price Excludes:**

- Airfare.
- Visa fees.
- Airport taxes.
- Meals not included in itinerary.
- Drinks.
- Expenses of a personal nature.
- Any changes to the accommodation.
- Any changes to the itinerary.
- Travel and medical insurance.

**\*\* Excursions:** A qualified grade 1 safari guide from Barefoot Safaris will accompany clients on all excursions except where it is necessary to employ a guide from local parks.

**ADDITIONAL INFORMATION**

**Climate:** Botswana's wet season runs from mid-October or early November to March or April. During the rainy season, daytime temperatures are pleasantly warm, but low lying areas can sometimes be humid. The heaviest rain is confined to the highlands, while while the lakeshore is much drier. The dry season tends to be cooler and generally runs from May to early October. During the dry season, daytime temperatures in the lower areas are fairly consistent at 21°C to 26°C. In the highlands daytime temperatures can be considerably cooler ranging between 10°C and 20°C. Nights can be particularly cold during the dry season, so warm clothing is essential.

**Baggage:**

- One piece of main luggage only (**max 15kg**), this should be a soft bag rather than a hard suitcase, so it can be easily stowed and not take up too much room in the vehicle or in the tent. Space in the vehicle is restricted.
- A day sack (large enough to carry your camera, water bottle, & binoculars etc) is also essential.
- Sleeping Bag

**Clothing and Footwear:**

- For comfort in the heat, lightweight cotton is best. Brightly colored



clothing is not appropriate for safari because it is easily seen by animals and has the added discomfort of attracting insects (wear muted tones in natural colors i.e. beige, khaki, olive, etc, but **not** army-style camouflage clothing).

- A long-sleeved shirt is essential to protect neck and arms while on game walks/drives.
- Long trousers and socks for evenings.
- Windproof/waterproof jacket.
- Lightweight trail boots.
- Trainers or sandals for relaxing.
- Sunhat.
- Swimming gear.
- Warm mid layers i.e. fleece or jumper for cool nights and early mornings
- Kagoul if you are travelling during the rains.

### Equipment:

- A laundry service may be available in some hotels, but we recommend you take biodegradable travel detergent
- Sleeping bag
- Torch (Head torch is ideal)
- Water bottle
- Sunglasses, sunscreen and lip salve
- Insect repellent
- Binoculars
- Dust can be a problem for cameras; take a dustproof bag

### Medicine:

- Basic personal first aid kit
- Any prescription drugs required
- Female sanitary products
- Malaria prophylaxis

### Visas and Permits:

**Zimbabwe:** Holders of UK, USA, NZ, NOR, NL passports do require a visa, but with sufficient advance warning it may be possible to have this requirement waived. In view of the unreliability of local communications however, you must be prepared to pay for your visa at the border (approx US\$65). It is unnecessary to acquire your Zambian visa in advance.

This information is given in good faith, but may be subject to change without warning.

Please note that, where appropriate, obtaining a valid visa is ultimately your responsibility. Please consult a visa agency or the consular authorities 4-6 weeks before departure for the most up-to-date information.

### Vaccinations& Health Advice:

Vaccination requirements & other health advice can change, so please check with a specialized travel clinic for up todate information before you depart. For useful advice you can visit The Medical Advisory Service for Travelers Abroad [www.masta.org](http://www.masta.org)

Nevertheless we recommend that you protect yourselves against: *Malaria, Hepatitis A, and Polio& Typhoidas a minimum.*

**Food.** Any special dietary requirements should be explained to us in writing at time of booking. Gluten free flour should be brought with you if required. Decaffeinated coffee should be brought with you if required.

**Local Costs:**10 Breakfasts and 9 evening meals are included. You must pay for all other meals yourself (you can eat very well for £10 a day). Approximate costs are given for guidance only, and may vary widely according to location and type of establishment.

Coffee/tea	USD 2.00
Soft drink	USD 1.50
Medium beer	USD 3.00
Local snack lunch	USD 5.00

\*reasonable mid-range tourist class restaurant.

### Optional excursions:

Some or all of the excursions detailed below may be available; others not listed may also be available. Approximate per person costs are given for guidance only, and may depend on the number of participants. Your safari guide should be able to assist you in arranging them.

### Vic Falls

River boarding	USD155.00
----------------	-----------

Bungee Jumping	USD150.00
Elephant Back Trails	USD185.00
Flights over Victoria Falls	USD185.00
Gorge Swing	USD50.00
Horse Back Trails	USD100.00
Hydro speeding	USD100.00
Devils pool	USD40.00
Lion Encounter	USD160.00
White Water Rafting	USD180.00

**Tipping:** For better or worse, tipping is an accepted part of everyday life, and - although it is always at your discretion - you will be expected to tip to reward service. Your group leader will give you an indication of when and how much is appropriate. This can vary widely, but please allow \$50-00 per person for this tour.

**Seasonal changes:** Although all rooms and tents that we use are protected with mosquito netting; there will be insects and mosquitoes about. so you should be prepared with insect repellent and appropriate long sleeved/legged clothing.

Insects are attracted to lights at night and are especially prevalent during the rainy season. Switching the lights off and placing a hurricane lamp a distance from you will remove the problem.

The evenings and mornings will be chilly from about June to August; so it is advisable to take a light sweater or fleece.

**Currency:** We recommend that you bring all you need for the trip as cash in US\$.

**NB:** Pre 1990 dollar bills are not accepted in most African countries. In reality there is little opportunity to change money other than at the airport on arrival, so it makes sense to change what you will need for the duration of the tour. Beware of marked, torn or dirty notes, as they may not be accepted. Your group leader will be able to advise you when and where else it may possible to change currency. Optional excursions can generally be paid in US dollars cash.

### Climate Chart: Botswana.

Month	Jan	Feb	Mar	Apr	May	Jun	Jul	Aug	Sep	Oct	Nov	Dec
Temp: Average Daily Max/Min (°C)	26/17	26/17	26/17	26/15	25/12	23/10	23/9	25/12	29/15	31/18	29/17	27/17
Rain: Average Monthly (mm)	231	191	142	18	3	0	0	0	0	10	91	150
Relative Humidity (%)	71	70	56	47	32	32	29	26	19	23	46	61